



METAL ROOFING
Systems, Inc

35
YEAR
WARRANTY

SEE REVERSE SIDE FOR MATERIAL AVAILABILITY



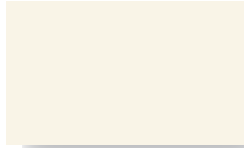
ENVIRONMENTALLY SMART COLORS - DESIGNED ENERGY EFFICIENT



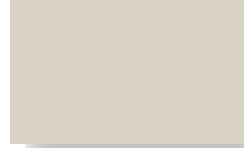
TERRA COTTA



AGED COPPER



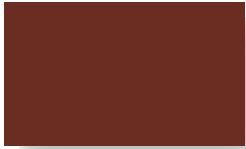
BONE WHITE



SANDSTONE



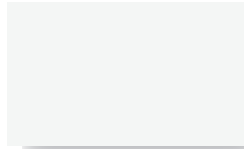
SURREY BEIGE



COLONIAL RED



PATINA GREEN



REGAL WHITE



ASH GRAY



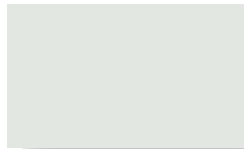
SIERRA TAN



REGAL RED



HEMLOCK GREEN



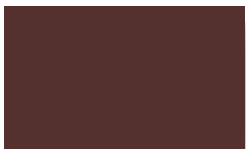
STONE WHITE



DOVE GRAY



MEDIUM BRONZE



BURGUNDY



HARTFORD GREEN



SLATE BLUE



SLATE GRAY



MANSARD BROWN



MATTE BLACK



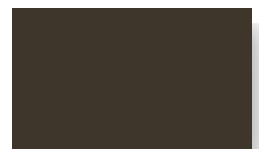
EVERGREEN



REGAL BLUE

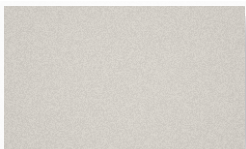


CHARCOAL GRAY



DARK BRONZE

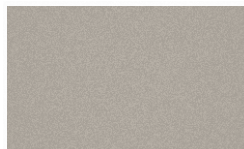
METALLIC COLORS



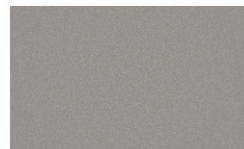
*SILVER



*COPPER



*CHAMPAGNE



*PRE-WEATHERED GALVALUME™

NON-PAINTED



ACRYLIC COATED GALVALUME™

*** CONTACT YOUR REPRESENTATIVE FOR EXACT COLOR CHIP SAMPLE**



LOCATIONS

7687 Mikron Drive
Stanley, NC 28164
P: 704.820.3110
F: 704.820.0113

370-C Allied Drive
Conway, SC 29526
P: 843.347.6673
F: 843.347.6693

2304 Silverdale Drive
Johnson City, TN 37401
P: 423.434.0535
F: 423.434.0537



*Available at a slight price premium.

Colors shown are matched as accurately as possible, but may vary slightly from finished product. These rich and vibrant colors are produced with either Kynar 500® or Hylar 5000® resins, which provide superior color retention, and allow us to offer non-prorated coating warranties for most applications. Coating warranty varies for Regal Red, Matte Black, Copper, Silver, Champagne, and Pre-Weathered Galvalume. Metallics are warranted for chip, crack, and peel only. Please contact your representative for more information.

www.metalroofingsystems.biz

Faster. Smarter. Better. Period.

STOCK AVAILABILITY MATRIX

							GALVALUME		ALUMINUM			
			ISR	EMI	3yr.	SRI	24 ga.	22 ga.	.032	.040	.050	.063
Aged Copper	★	L	0.47	0.85	0.46	53	●		●			
Ash Gray	★	L	0.39	0.84	0.39	41	●	●	●	●		
Bone White	★	L	0.47	0.83	N/A	58	●		●	●	●	●
Burgundy	★		0.25	0.85	0.23	23	●					
Champagne Metallic	★	L	0.37	0.80	0.35	37	●					
Charcoal Gray	★		0.29	0.84	0.28	28	●	●	●	●		
Colonial Red	★	L	0.30	0.85	0.29	30	●		●	●	●	
Copper Metallic	★	L	0.49	0.86	0.47	56	●		●			
Dark Bronze	★		0.26	0.84	0.25	24	●	●	●	●	●	●
Dove Gray	★	L	0.49	0.86	N/A	56	●	●	●	●		
Evergreen	★		0.27	0.86	0.26	26	●		●	●	●	
Hartford Green	★		0.26	0.85	0.25	24	●		●	●	●	
Hemlock Green	★	L	0.29	0.86	0.29	29	●					
Mansard Brown	★		0.27	0.86	0.25	26	●	●	●	●	●	
Matte Black	★		0.29	0.83	0.27	27	●	●	●	●	●	
Medium Bronze	★	L	0.30	0.87	0.28	31	●	●	●	●	●	●
Patina Green	★		0.28	0.87	0.28	28	●					
Pre-weathered Galvalume*	★		0.30	0.79	0.28	27	●		●			
Regal Blue	★		0.26	0.85	0.25	24	●		●			
Regal Red	★	L	0.42	0.83	0.41	45	●		●		●	
Regal White	★	L	0.67	0.86	0.67	81	●	●	●	●	●	●
Sandstone	★	L	0.54	0.86	0.53	63	●		●	●	●	
Sierra Tan	★	L	0.35	0.86	0.34	37	●	●	●	●	●	
Silver Metallic	★	L	0.59	0.79	0.60	67	●		●	●	●	
Slate Blue	★		0.29	0.85	0.28	28	●		●			
Slate Gray	★	L	0.33	0.84	0.33	33	●	●	●	●	●	
Stone White	★	L	0.60	0.86	0.56	71	●		●	●	●	●
Surrey Beige	★	L	0.42	0.85	0.41	46	●					
Terra Cotta	★	L	0.35	0.86	0.35	37	●		●	●		
Acrylic Coated Galvalume*	★	L	0.67	0.14	0.55	56	●	●				

*** IF DESIRED COLOR IS NOT LISTED ON MATRIX PLEASE CONTACT METAL ROOFING SYSTEMS FOR AVAILABILITY**

NOTES

- All metal is painted with a .20 mil primer and .70 -.90 mil Top Coat of 70% Kynar 500 or Hylar 5000. The reverse side has a .20 primer and .30 - .40 backer coating.
- 22 gauge steel available upon request.
- For low slope roofing to meet Energy Star requirements the ISR must be ≥ 0.65 . After 3 years, the solar reflectance must be ≥ 0.50 .
- For steep slope roofing to meet Energy Star requirements the ISR must be ≥ 0.25 . After 3 years, the solar reflectance must be ≥ 0.15 .
- For low slope roofing to meet LEED 2009 requirements the SRI must be ≥ 78 .
- For steep slope roofing to meet LEED 2009 requirements the SRI for 100% of the roof must be ≥ 29 .
- Low slope is defined as $\leq 2:12$.
- Steep slope is defined as $>2:12$.

KEY

●	Stocked Item
★	Energy Star Compliant
L	LEED 2009 Compliant
ISR	Initial Solar Reflectance
EMI	Emissivity
SRI	Solar Reflectance Index



METAL ROOFING
Systems, Inc

Oil canning is an aesthetic issue and is an inherent part of light gauge cold formed metal products. By using coil that has been processed properly, designing for thermal movement, following stringent specifications for installation and proper handling most oil canning can be eliminated. Oil canning is not grounds for coil/panel rejection.

Galvalume® is a registered trademark of BIEC. Hylar 5000 is a registered trademark of Solvay Solexis, Inc. Kynar 500 is a registered trademark of Atofina, Inc.